

# SADNES GARN

SOURCE OF CREATIVITY SINCE 1888





# SWEATER

Sweater with round yoke

Instruction: Asa Christiansen

Original from 1503, nr 10

## Sizes:

(XS) S (M) L (XL) XXL

## Measurements:

Bust: (92) 96 (104) 110 (118) 126 cm

Length: (54) 54 (56) 58 (60) 60 cm

Sleeve length: 47 cm, or suitable length

All measurements are for the finished garment = personal body measurements + movement allowance. The measurements are all according to given tension

## Yarn:

ALPAKKA (100% alpaca, 50 g = 110 m)

## Alternate yarn:

PEER GYNT, SMART, DUO, MANDARIN MEDI, MERINOULL

**Note! If alternate yarn is chosen be sure to check the yardage on label. The image of garment might change by using alternate yarn.**

## Yarn required:

Grey melange 1042: (7) 7 (8) 9 (10) 10 balls

Charcoal 1088: (1) 1 (1) 2 (2) 2 balls

Coral 4207: 1 ball all sizes

Acid yellow 2005 - discontinued colour, can be replaced by corn yellow 2015: 1 ball all sizes

Natural 1012: (1) 1 (1) 1 (2) 2 balls

## Suggested knitting needles:

Circular and double pointed ndls no 4. Small circ ndls no 3½.

Needle sizes are only suggestions. If your knitting shows tighter tension, use thicker needles, for looser tension use thinner needles

## Tension:

20 sts St-st with ndls no 4 = 10 cm

## Front and back:

With grey melange and circ ndls no 4 cast on (202) 212 (228) 242 (260) 278 sts. Join and work 6 cm ribbing k1, p1 in rounds.

Work 1 rnd St-st **and at the same time** dec (18) 20 (20) 22 (24) 26 sts evenly spaced = (184) 192 (208) 220 (236) 252 sts.

Mark sides with (92) 96 (104) 110 (118) 126 sts for each part.

Cont St-st until work meas (33) 33 (35) 37 (39) 39 cm.

Cast off 8 sts at each side (= 4 sts at each side of markers) for armholes.

Put aside and work sleeves.

## Sleeves:

With grey melange and double pointed ndls no 4 cast on (46) 48 (50) 52 (54) 56 sts. Join and work 6 cm ribbing k1, p1 in rnds.

Work 1 rnd St-st **and at the same time** dec 4 sts evenly spaced = (42) 44 (46) 48 (50) 52 sts.

Mark first and last st on rnd. Cont in St-st **and at the same time** inc 1 st at each side of marker. Rep inc every (3½) 3 (3) 2½ (2½) 2½ cm until (64) 70 (72) 76 (78) 80 sts on ndls. Cont until work meas 47 cm or suitable length.

Cast off 8 sts at center under sleeve.

Put aside and work other sleeve the same.

## Yoke:

With charcoal transfer sts for sleeves to same circ ndls as sts for front and back, over cast off sts at sides = (280) 300 (320) 340 (360) 380 sts.

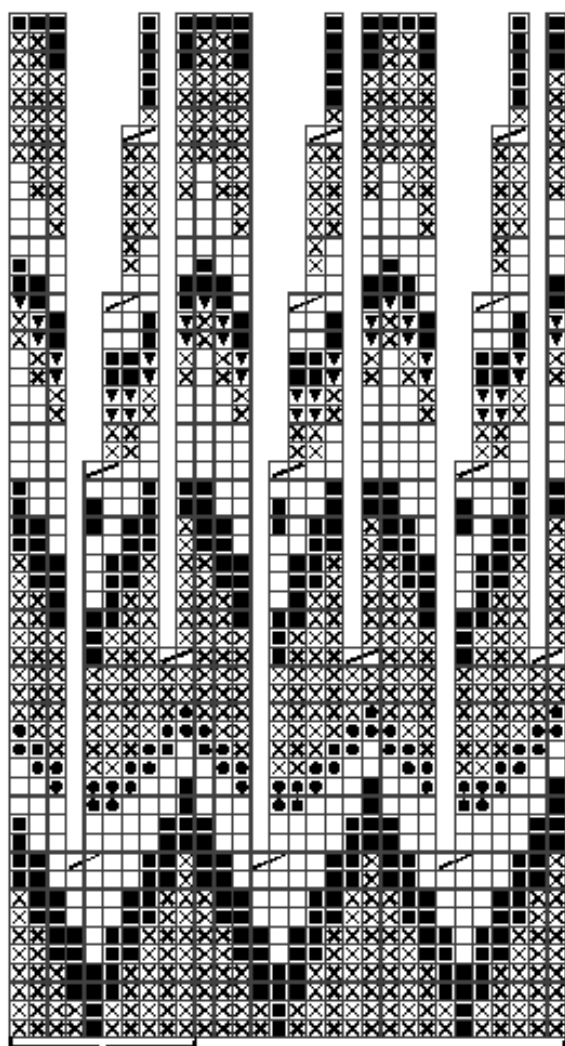
Work **diagram** and dec as shown = (140) 150 (160) 170 (180) 190 sts.

**Neckband:** Change to circ ndls no 3½, work 1 rnd St-st in grey melange **and at the same time** dec evenly spaced to (124) 130 (136) 140 (144) 148 sts.

Work 2½ cm ribbing k1, p1 in rnds. Cast off rib-wise.

## Finishing:

Sew tog under sleeves.



- Natural
- Acid yellow
- ⊗ Grey melange
- Charcoal
- ▽ Coral
- ⊞ k2tog